

FOR LEASE

Building #51, Suite 180

3601 SE Columbia Way, Vancouver, WA



- 1,240 SF Office Space
- 120/208 Volt Power
- Available Immediately

For more information contact:
Dave Brown
www.columbiacommercial.com

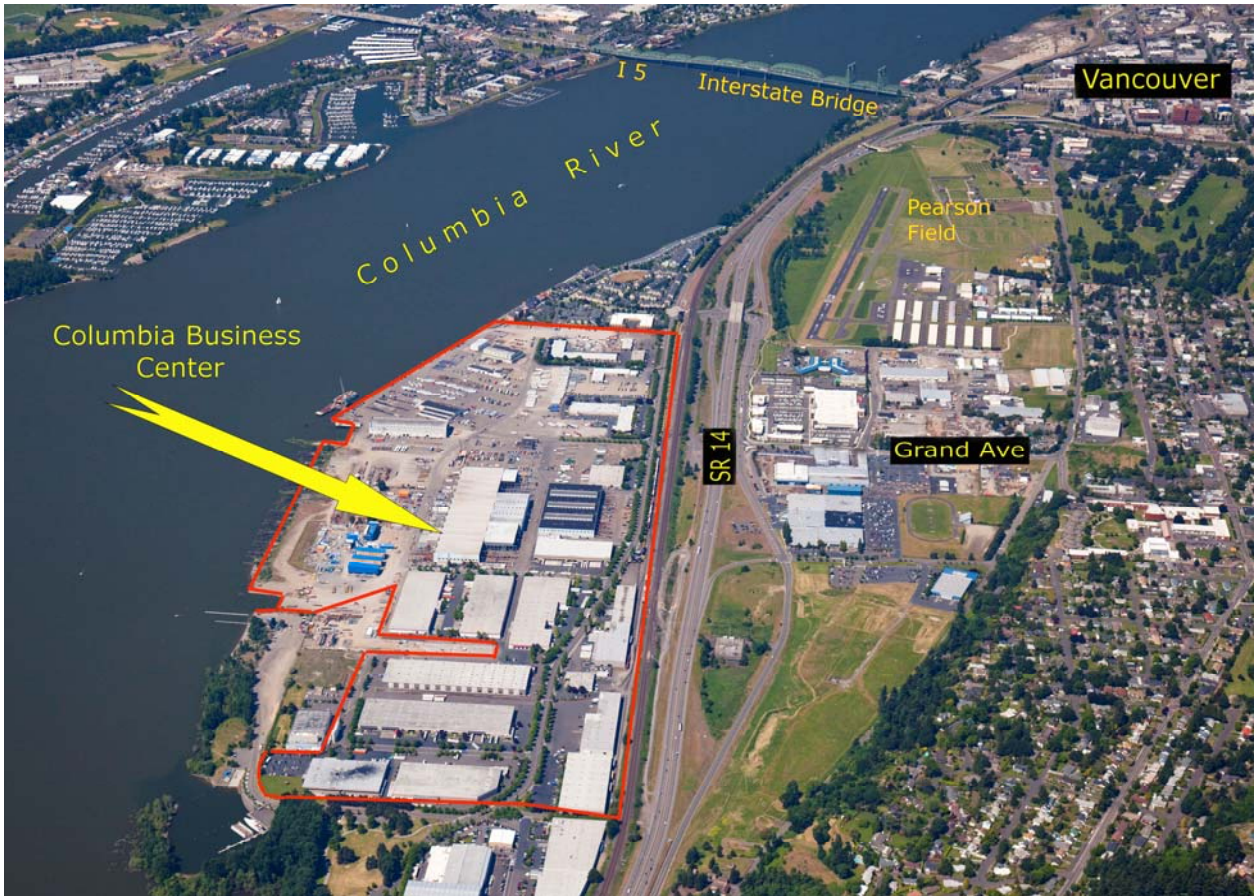


1672 WILLAMETTE FALLS DR., SUITE E
PO Box 46
West Linn, Oregon 97068
PH: (503) 650-5300
FX: (503)650-5343

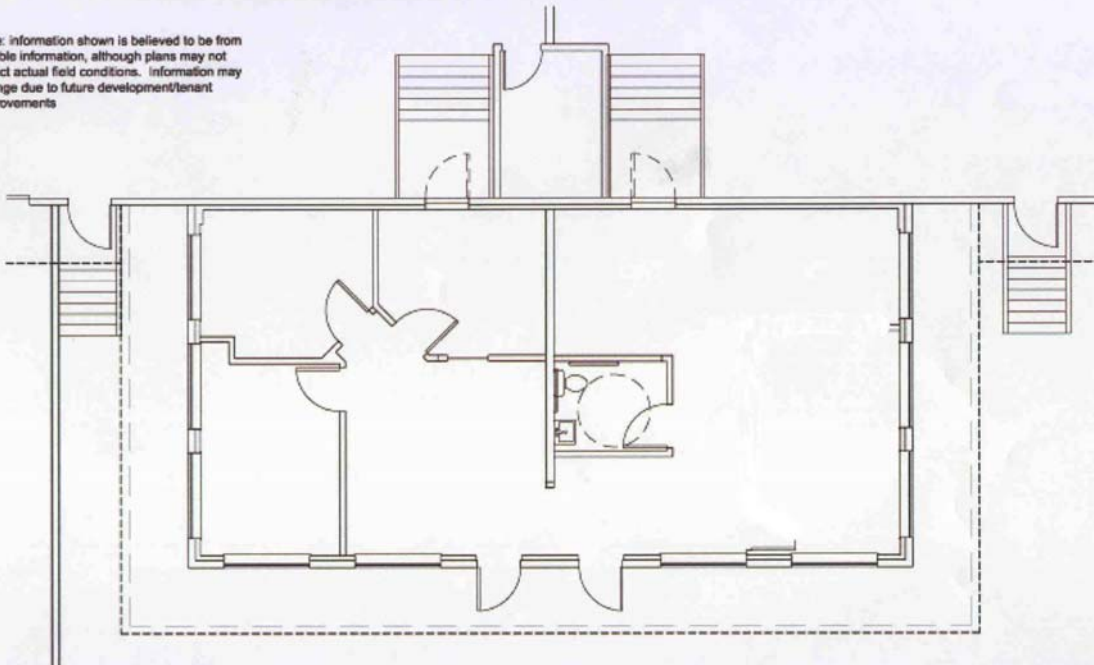


9120 NE Vancouver Mall Loop, SUITE 200
PO Box 820406
VANCOUVER, WASHINGTON 98682
PH: (360) 735-8001
FX: (360) 735-8033

COLUMBIA COMMERCIAL PROPERTIES, LLC



Note: information shown is believed to be from reliable information, although plans may not reflect actual field conditions. Information may change due to future development/tenant improvements



Floor Plan - Suite 180
Scale: Approx. 1/8" = 1'-0"



Columbia Business Center - Building 51
Vancouver, Washington

10-02-08